

MARCH 14, 2010

Faith Baptist Church

350 N Stephenson Avenue, Peshtigo WI 54157
(715) 582-3655

More info online at (www.fbcpeshtigo.com)

Office Hours: Mon - Fri 8am-4pm

Service times are 8 & 10:50am, Sunday School & Discovery Hour 9:25am



Weekly Bulletin

Happening Today!

Welcome our guest
Wade Nolan

Order of Service

Prelude

Welcome &
Announcements

Vision in Action

Worship in Music

Offering Prayer/Music

Regular attendees worship in joyful giving; guests please just enjoy being our guests!

Children's Church Dismissal
(age 4 thru 2nd grade)

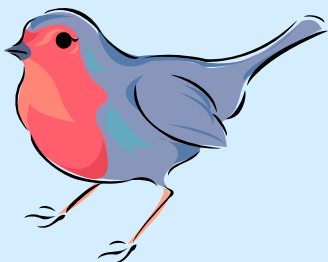
Message

Wade Nolan—Eph 2:10

Dismiss

For our guests – thank you so much for coming today – if there is anything we can do to help you in your spiritual journey, don't hesitate to ask. Please stop by the Welcome Center to get your free gift for visiting with us today.

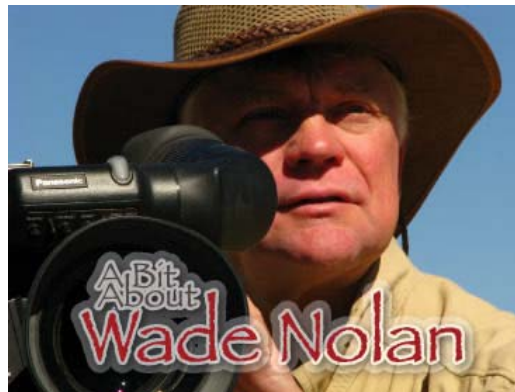
Bibles are available near the Welcome Center for use in the services.



We Are Ordinary People Loving & Serving an Extraordinary God

Our Vision:

"To worship God, grow in Christlikeness, and fulfill our ministries, so we can lead people to Christ."



Special Guest Speaker

Wade Nolan

"I believe that God has a plan for our lives and that it is our responsibility to read the job description. I also believe we are a sum total of Who we follow and lessons learned along the path we've walked." James summed it up, "Be doers of the Word". Therefore, it is my job to share what I've learned. Speaking to men about Christ is clearly part of God's plan for my life".

Previous sermons are available on the church website: www.fbcpeshtigo.com

NOTES:

This Week's Events – Mar 15-21

- | | | |
|-------|---------|--|
| Tues | 7:30am | Men's Study & Prayer Group |
| | 9:00am | MOPS |
| | 6:00pm | Elder/Deacon Meeting |
| | 6:30pm | Seasons of Hope @ Sandberg's |
| | 6:30pm | DivorceCare & DC4Kids |
| | 7:00pm | Grace Young Adult Group |
| Wed | 6:30pm | AWANA |
| | 6:30pm | Men, Women & Youth Groups |
| | 7:00pm | Life Hurts...God Heals @Pennington's |
| Thurs | 6:30pm | Board of Ministry Directors Mtg |
| Sat | 6:00am | Men's Ministry Meeting |
| Sun | 8:00am | Worship Service |
| | 9:25am | SS & Discovery Hour |
| | 10:50am | Worship Service |
| | | Child Dedications during second service (Kuchta & Owens) |
| | 9-1pm | Burger King Fundraiser for Texas Mission Trip |

Communication:

The Wild Game Dinner happened last night, and today we see the remnants of "hunter's heaven" around the Great Room. Thanks to all who worked so hard to make it happen. Many plans and programs are being worked on by many in the background, but the main point is the same: People. A song by Point of Grace a few years ago is a great reminder that "God Loves People More Than Anything." You matter to God! So we pray for you, and for our communities, while we work at all the organizing and staffing and scheduling of programs. If we ever lose sight of people being the main point, then we lose sight of the heart of God.

3 Services Starting Easter Sunday: 8am, 9:30am, & 11am
Reign Forest (kids), Ignite (youth), & Discover Hour (Adults) will continue to meet at 9:30, with new opportunities starting this Fall

The next Sunday Night Worship will be March 28th, 7pm.

Women's Ministries

Upcoming event-- May 1, 2010...There is a Biblical Womanhood one-day conference at Spring Lake Church in Green Bay, cost \$25 which includes lunch. Linda Lidner will be the speaker, coming from the Minneapolis area...More details to follow.. Mark your calendars!!!!



Melissa Popp

Youth Ministries

Life Hurts...God Heals is 7-9pm Wed at N1970 Hale Rd in Peshtigo.

30 Hour Famine: April 9-10

Texas Mission Trip: June 18-26 (Information meeting today during 2nd service)

'Subs for Lunch' Texas Mission Trip

Fundraiser, April 25th during and after 3rd service. This will be by donation.



Pastor Tim Harwell

Children's Ministries

Families, you are invited to make this Easter

an opportunity to Celebrate by Serving! Our Easter breakfast is a terrific opportunity for kids and parents to serve our church family and guests together--to celebrate Jesus' resurrection by serving Him as we serve others. There are a variety of opportunities--please check out the sign-up board next to the Children's Ministry Desk and sign up today!

Contact Donna Leupp for more information.

Check out the spring camp opportunities!

At Lake Ellen

- Scrapbooking Retreat--April 9-11

- Father/Son Fishing Retreat--May 28-31

- Mini Trail Retreat for grades--6-8 May 28-31

At Lake Lundgren

- Scrapbooking & Quilting Retreat--April 22-25

Check out the Faith Baptist Website for summer camp dates and links to the camps.



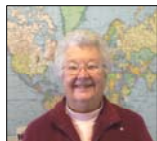
Global Ministries

March Adopt-a-Missionary will be used to help Peshtigo Food Pantry provide Easter breakfast/dinners. Items that are needed: Canned Hams, Jello, Canned Fruit, Pudding, Green Beans, Canned Fried Onions, Box Potatoes.

If you wish to donate items, put them in the Peshtigo Food Pantry collection box under the Missions map by the Welcome Center. This box will be permanently located in this spot so donations can be made at any time.

Any monies donated will be given to the Pantry to purchase perishable items.

Communication - Missionary letters are available at the Missions bulletin board.



Harriet Gross

Office Ministries

Baptism, Dedications or Membership

We have 2 **children being dedicated** on the 21st of March during 2nd service, Daniel Kuchta and Gabriel Owens.

Anyone interested in taking part in any of these please call the office to set something up.

Business Meetings

Our next quarterly business meeting is April 11th after 3rd service, accompanied by a potluck lunch.

Finances

YTD Giving 3/12/10	\$ 92,472.82
YTD Expenses 3/12/10	\$ 83,077.25
Difference	\$ 9,395.57
Beginning Cash Balance	\$ 47,377.00
Current Cash Balance	\$ 56,772.57

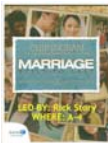
If you would like envelopes for your offering please contact Maryann Deschaine at 582-9004.

We are currently looking for a back-up secretary. If you are interested in this position please contact the church office.

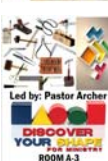
Adult/Family Ministries

Discovering Faith Baptist: Membership Class (4 wks)

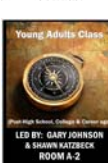
New Discovery Hour classes



Built to Last—If the goal is a marriage built to last, then maybe there are patterns from the past that we have to break, going against the hijacked version of marriage in our culture.



Discovering My SHAPE for Ministry - At the end of all things, God will ask you what did you do with my Son? And then, What did you do with what I gave you? How did you use the gifts I gave you to build up the Body of Christ? Do you want a GOOD answer? Discover your SHAPE for Ministry.



Young Adults - NEW, with Gary Johnson and Shawn Katzbeck. Are you graduated from High School or College Age? This is JUST for you to encourage you in your spiritual growth around this stage of life you are in.

Field of Faith: accepting applications for your own personal garden plot, brochures with registration forms available at Welcome Center. Established members contact Robin Behrens to confirm or release your plot for 2010. ALL members, new or old, are requested to attend opening meeting May 1st 9am, or May 4th 7pm. Questions? Robin:

715-789-2278 or rlbhrens@centurytel.net

There is a sign up for helping with the **Easter Breakfast assistance** at the Welcome Center. Needed: cooks, clean up & set up. Needed appliances are: electric fry pans & electric griddles.



Pastor Archer Leupp

Men's Ministries

MEN!!! "Faith & Disciplines" Discipleship Groups are almost full. 2 year commitment. Contact Pastor Archer for details.